

ILLUSTRATED PARTS BREAKDOWN

VR319/VR320 MONITORS

HOW TO USE THE IPB

GENERAL

This IPB is compiled following the organization and nomenclature of the engineering drawing structure.

MAJOR ASSEMBLY LOCATOR (When Applicable)

The Major Assembly Locator (first illustration) is an index that provides a description and a figure reference for all illustrations used in this manual.

INDENTED PARTS LIST

This manual identifies each assembly being broken down (figure reference callout), and all parts of that assembly. Further breakdown of an assembly is shown by an asterisk (*) preceding the item callouts in the Description Column. The number of asterisks preceding an item is used to denote the subordination of that item with respect to the Major Assembly. A single asterisk preceding an item description indicates that the item is part of the major assembly being illustrated. Items that are subordinate to single asterisks items, are denoted by two asterisks (**) and immediately follow the related single asterisk item. This system of part identification provides a means for the user to identify the next higher assembly item and make alternate selections for parts when the required replacement part of assembly is not immediately available.

COLUMN CALLOUT DESCRIPTION

Figure and Item – Indicates the figure number and item number of each part.

Description – Lists the name of the part and pertinent specifications (when required). Asterisks preceding the description denote the subordination of the part to the next higher assembly.

DEC Part No. – Lists the Digital part ordering number. A blank in this column indicates a Digital part number was not assigned at the time of publication.

ECO Cut-In – The notation at the top of this column indicates the ECO level of the system (option), at which the IPB was initially prepared. Subsequent ECO level designations, that modify existing parts or add new parts to the device, are inserted in the ECO Cut-In column next to the part that is added or modified.

Used On Code – Letters in this column correspond to the variation codes assigned in Figure 1. Parts with an Alpha notation(s) are used only in those option variations. A blank indicates that the part is used on all option variations.

Ref Fig No. – A cross reference between illustrations. For each Major Assembly, the number in this column denotes the figure of the next higher assembly. For all subassemblies, the number in this column denotes the figure showing additional detailed breakdown.

PART NUMBER/PART DESCRIPTION INDEX SECTION
Parts are indexed both numerically and alphabetically by description, referenced to a location within the IPB, by figure number and item number.

REVISION HISTORY

PRINTING	ECO LEVEL			DATE	OTHER IPB MANUALS REFERENCED
2nd Printing	VR319	00000-00003		23-AUG-91	N/A
	VR320	00000-00003			

Digital Equipment Corporation reserves the right, without notice, to make substitutions and modifications in the specifications of products documented in this manual and further reserves the right to withdraw any of these products from the market without notice.

Digital Equipment Corporation is not responsible for errors which may appear in the technical description (including illustrations and photographs) of the products covered by this manual.

None of the descriptions contained in this manual imply the granting of any license whatsoever to make, use or sell equipment constructed in accordance therewith.

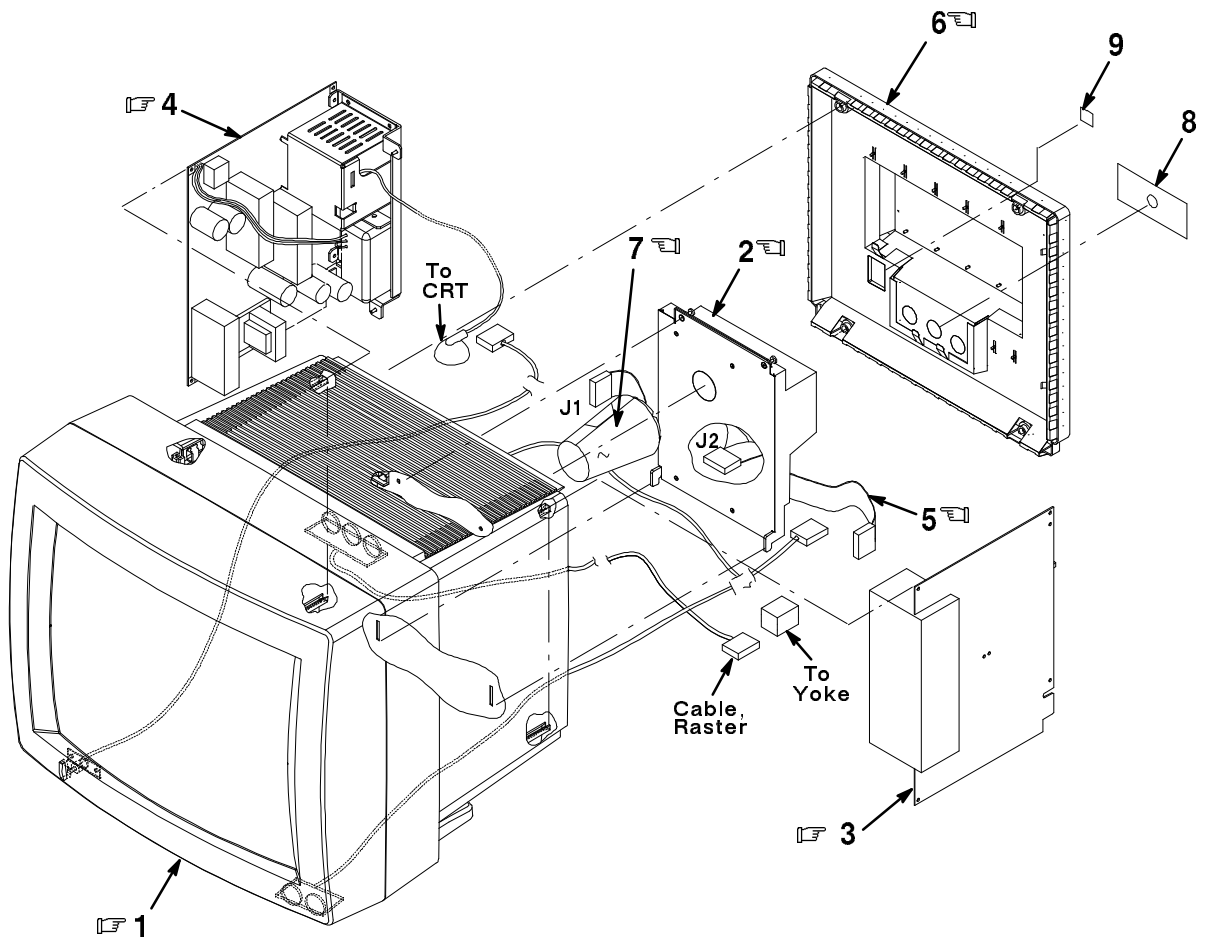
Restricted Rights: Use, duplication or disclosure by the U.S. Government is subject to restrictions as set forth in subparagraph (c) (1) (ii) of the Rights in Technical Data and Computer Software clause at DFARS 252.227-2713.

Copyright © 1990, 1991 by Digital Equipment Corporation. All rights reserved.
Printed in the U.S.A.

The postage-paid READER'S COMMENTS form on the last page of this document requests your critical evaluation to assist us in preparing future documentation.

The following are trademarks of Digital Equipment Corporation :

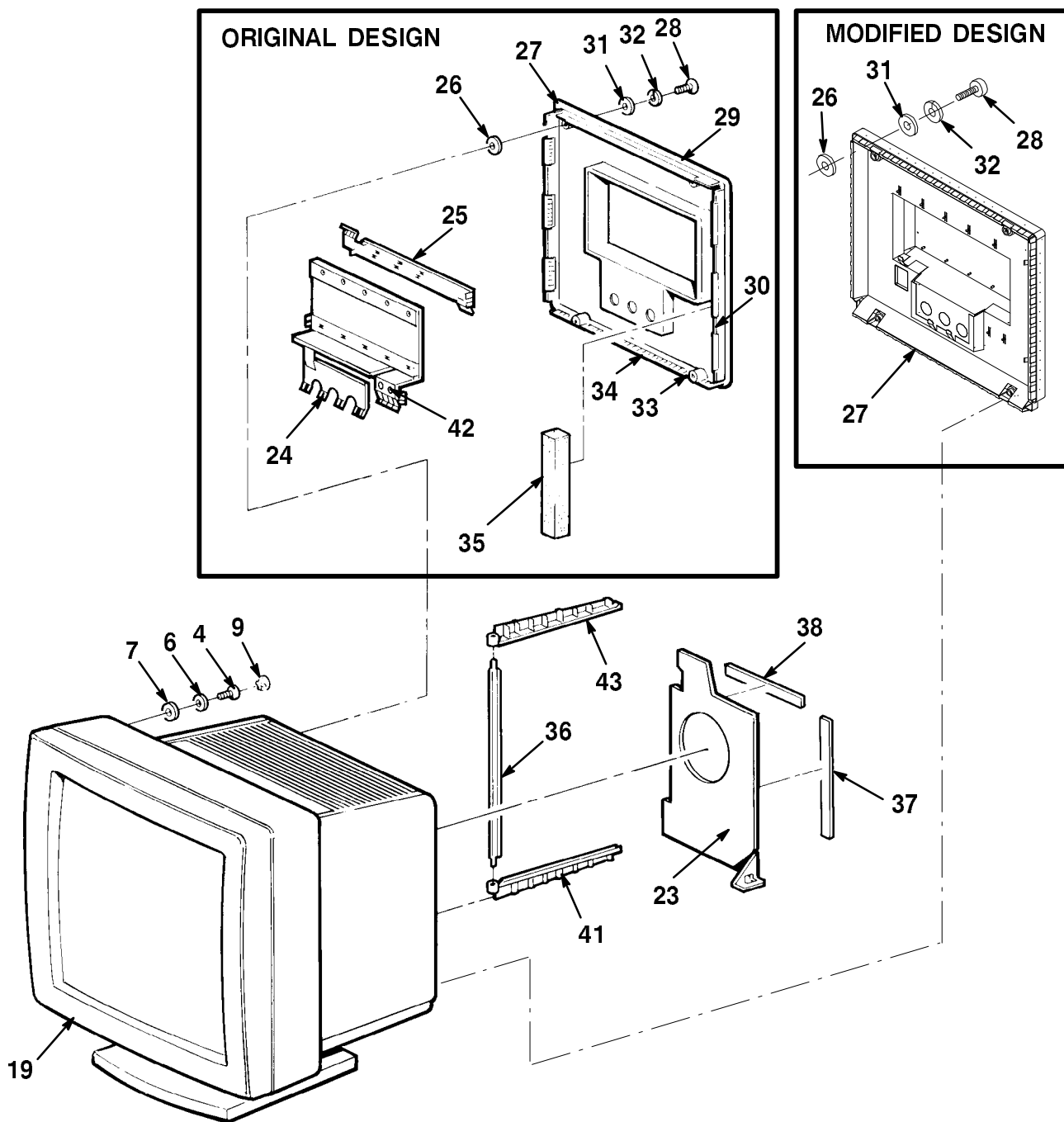
DEC, DECdirect, VR and the DIGITAL logo.



VR319-01-IL

Figure 1. Monitor Assembly, VR319 Monochrome

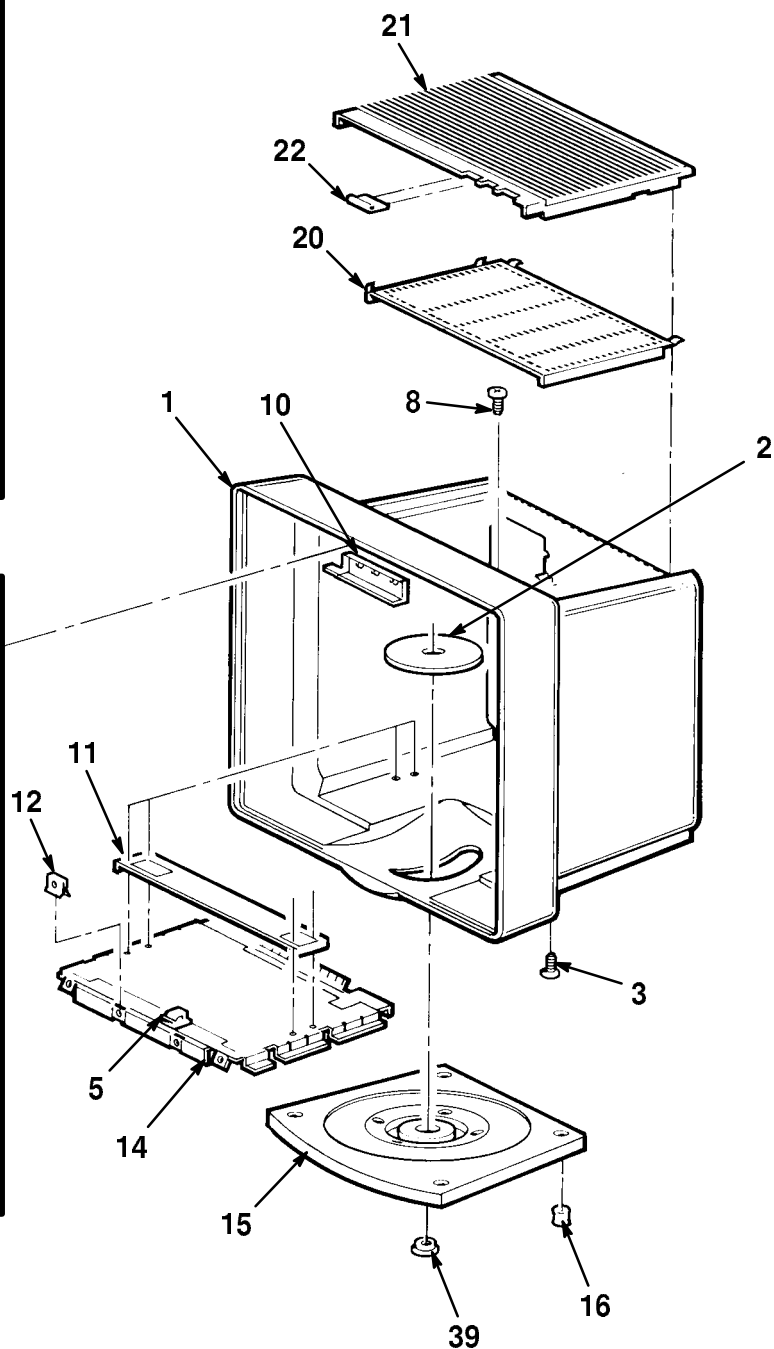
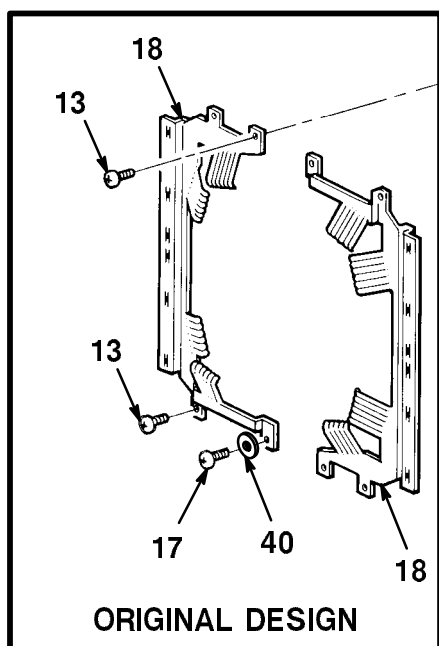
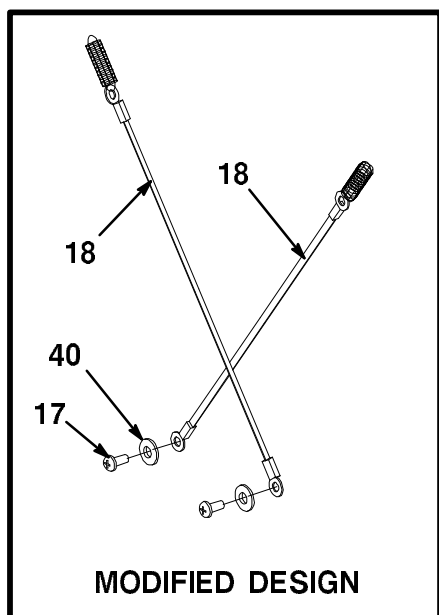
FIG.& ITEM NO.	DESCRIPTION	DEC PART NO.	ECO CUT-IN VR319 00000	USED ON CODE	REF FIG NO.
1-	MONITOR ASSEMBLY, VR319 MONOCHROME				
	Code A - Used On VR319-C4 (Southern Hemisphere 120/240V, 66 Hz)	VR319-C4		A	
	Code B - Used On VR319-CA (Northern Hemisphere 120/240V, 66 Hz)	VR319-CA		B	
	Code C - Used On VR319-DA (Northern Hemisphere 120/240V, 72 Hz)	VR319-DA		C	
	Code D - Used On VR319-D4 (Southern Hemisphere 120/240V, 72 Hz)	VR319-D4		D	
1	*CRT/CHASSIS ASSEMBLY (Northern Hemisphere 120/240V)	70-27429-05		BC	1A
	*CRT/CHASSIS ASSEMBLY (Southern Hemisphere 120/240V)	70-27429-06		AD	1A
	*CRT/CHASSIS ASSEMBLY (Northern Hemisphere 120/240V) (deleted)	70-27429-07	00003		1A
	*CRT/CHASSIS ASSEMBLY (Southern Hemisphere 120/240V) (deleted)	70-27429-08	00003		1A
2	*CASTING ASSEMBLY, MONOCHROME VIDEO	70-27010-02			1C
3	*Module, Monochrome Deflection	54-19303-01			
4	*Module, Power Supply	54-19621-02			
5	*Cable Assembly, Interconnect (J5 Connector)	70-27000-01			
6	*Cover, Rear	70-26991-01			
7	*Collar, Video (added)	74-43499-01	00003		
8	*Label, Regulator	36-33038-01			
9	*Label, Power	36-32052-01			



SHOWN FOR REFERENCE ONLY

VR319-01A-IL

Figure 1A. CRT/Chassis Assembly, VR319 (Sheet 1 of 2)



SHOWN FOR REFERENCE ONLY

VR319-01B-IL

Figure 1A. CRT/Chassis Assembly, VR319 (Sheet 2 of 2)





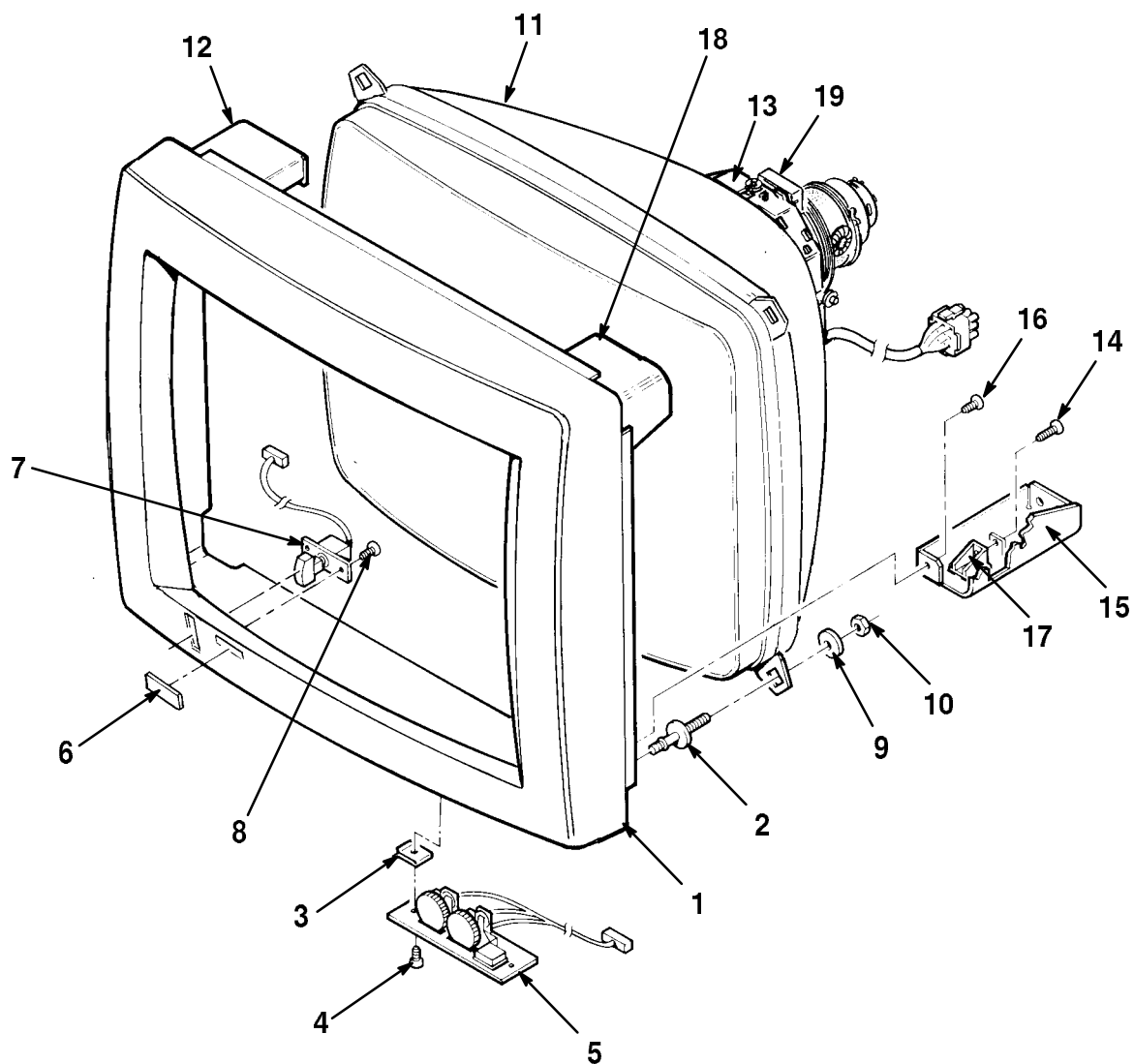
FIG.& ITEM NO.	DESCRIPTION	DEC PART NO.	ECO CUT-IN 70-27429 00001	USED ON CODE	REF FIG NO.
1A- 	CRT/CHASSIS ASSEMBLY, VR319 (Northern Hemisphere 120/240V)	70-27429-05		BC	1
	CRT/CHASSIS ASSEMBLY, VR319 (Southern Hemisphere 120/240V)	70-27429-06		AD	1
	CRT/CHASSIS ASSEMBLY, VR319 (deleted) (Northern Hemisphere 120/240V)	70-27429-07	VR319 00003		1
	CRT/CHASSIS ASSEMBLY, VR319 (deleted) (Southern Hemisphere 120/240V)	70-27429-08	VR319 00003		1
1	*Enclosure, Monitor	N/A			
2	*Retainer, Tilt Swivel	N/A			
3	*Screw, Self-Tap Flat Hd No. 6-19 x 1/2 (deleted)	N/A	VR319 00003		
4	*Screw, Machine Pan Hd No. 1/4-20 x 1/2 (deleted)	N/A	VR319 00003		
	*Screw, Machine Pan Hd No. 1/4-20 x 3/4 (added)	N/A	VR319 00003		
5	*Clip, Wire Routing	N/A			
6	*Washer, Helical Split	N/A			
7	*Washer, Flat SST	N/A			
8	*Screw, Machine Flat Hd No. 6-32 x 3/8	N/A			
9	*Plug, Hole	N/A			
10	*Control Assembly, Raster	N/A			
11	*Bracket, Stiffener Enclosure	N/A			
12	*Nut, Speed U-Type	N/A			
13	*Screw, Self-Tap Pan Hd No. 6-19 x 5/16 (deleted)	N/A	VR319 00003		
14	*Screen Assembly, Bottom Enclosure	N/A			
15	*Base Subassembly	N/A			
16	*Bumper, Rubber	N/A			
17	*Screw, Sems Pan Hd No. 8-32 x 5/16	N/A			
18	*Bracket, CRT Grounding (deleted)	N/A	VR319 00003		
	*Strap, CRT Grounding (added)	N/A			
19	*BEZEL ASSEMBLY, MONOCHROME	N/A			1B
20	*Screen, Top	N/A			
21	*Cover, Top	N/A			
22	*Cover, Pot. Slot	N/A			
23	*Bracket, Wall Support	N/A			
24	*Screen Assembly, Rear Cover Bottom (deleted)	N/A	VR319 00003		
25	*Screen, Rear Cover (deleted)	N/A	VR319 00003		

FIG.& ITEM NO.	DESCRIPTION	DEC PART NO.	ECO CUT-IN 70-27429 00001	USED ON CODE	REF FIG NO.
1A-					
26	*Washer, Flat Nylon	N/A			
27	*Cover, Rear	N/A			
28	*Screw, Cap Socket Hd No. 8-32 x 5/8	N/A			
29	*Shield, Clip On (deleted)	N/A	VR319 00003		
30	*Shield, Clip On (deleted)	N/A	VR319 00003		
31	*Washer, Flat	N/A			
32	*Washer, Helical Split	N/A			
33	*Shield, Clip On (deleted)	N/A	VR319 00003		
34	*Shield, Clip On (deleted)	N/A	VR319 00003		
35	*Foam, Rear Cover (deleted)	N/A	VR319 00003		
36	*Stiffener, P.S.	N/A			
37	*Shield, RFI Gasket (deleted)	N/A	VR319 00003		
38	*Shield, RFI Gasket (deleted)	N/A	VR319 00003		
39	*Plug, Button	N/A			
40	*Washer, Flat	N/A			
41	*Guide, Card	N/A			
42	*Fastener (deleted)	N/A	VR319 00003		
43	*Guide, Card	N/A			
NOTE: FRU LEVEL = 70-27429-05, 70-27429-06. ITEMS 1 thru 43 ARE PART OF THIS FRU, AND CAN NOT BE ORDERED SEPARATELY.					

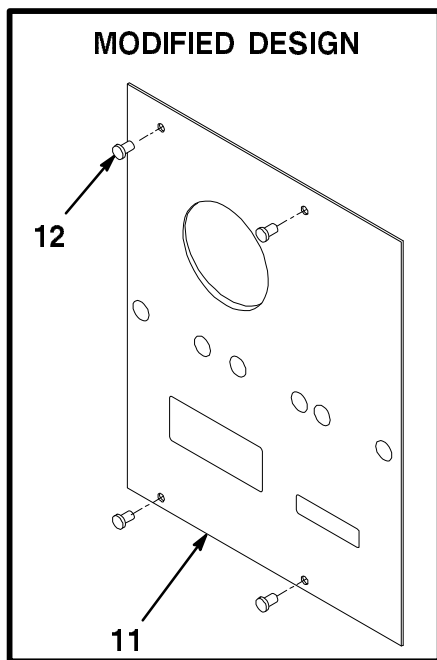


SHOWN FOR REFERENCE ONLY

VR319-01C-SC

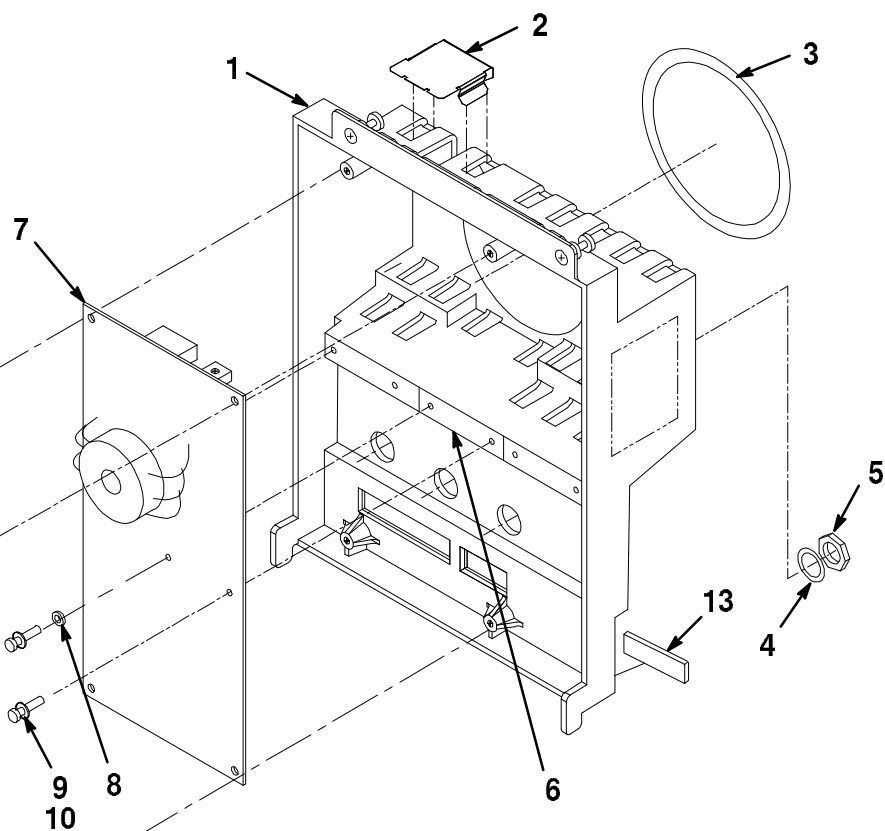
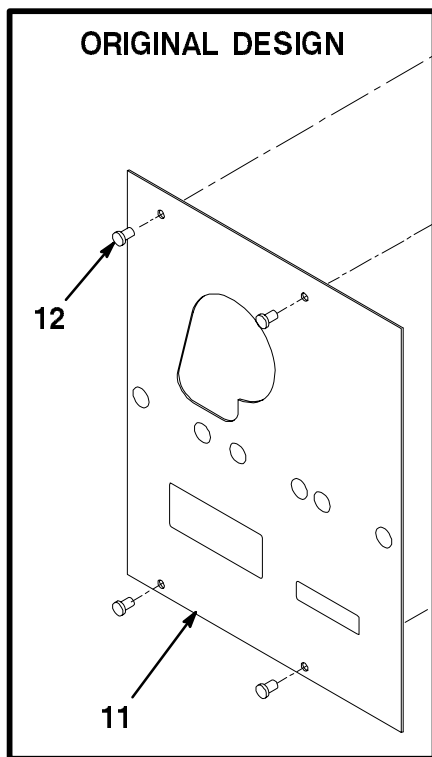
Figure 1B. Bezel Assembly, Monochrome

FIG.& ITEM NO.	DESCRIPTION	DEC PART NO.	E ECO CUT-IN 70-27006 00000	USED ON CODE	REF FIG NO.
1B-	BEZEL ASSEMBLY, MONOCHROME	N/A			1A
1	* Bezel, Monochrome	N/A			
2	* Fastener, CRT Mounting	N/A			
3	* Nut, U-Type Speed	N/A			
4	* Screw, Machine Flat Hd No. 6-32 x 3/8	N/A			
5	* Cable Assembly, Brightness/Contrast/Degauss	N/A			
6	* Logo, DIGITAL	N/A			
7	* Cable Assembly, Switch	N/A			
8	* Screw, Self-Tap Flat Hd No. 6-19 x 1/2	N/A			
9	* Washer, Flat	N/A			
10	* Nut, Lockwasher	N/A			
11	* CRT, 19" Monochrome (Dark Glass)	N/A			
12	* Bracket, Bezel Mounting	N/A			
13	* Yoke, Deflection 114 Deg	N/A			
14	* Screw, Machine Pan Hd No. 10-32	N/A			
15	* Bracket, Mono Bezel Mounting	N/A			
16	* Screw, Sems Pan Hd No. 10-32 x 3/8	N/A			
17	* Support, CRT Mono	N/A			
18	* Bracket, Bezel Mounting	N/A			
19	* Tape, Fiberglass Adhesive	N/A			
	NOTE: FRU LEVEL = 70-27429-05, 70-27429-06. ITEMS 1-19 ARE PART OF THIS FRU, AND CAN NOT BE ORDERED SEPARATELY.				



INDICATES FRU LEVEL PARTS.


PARTS LIST

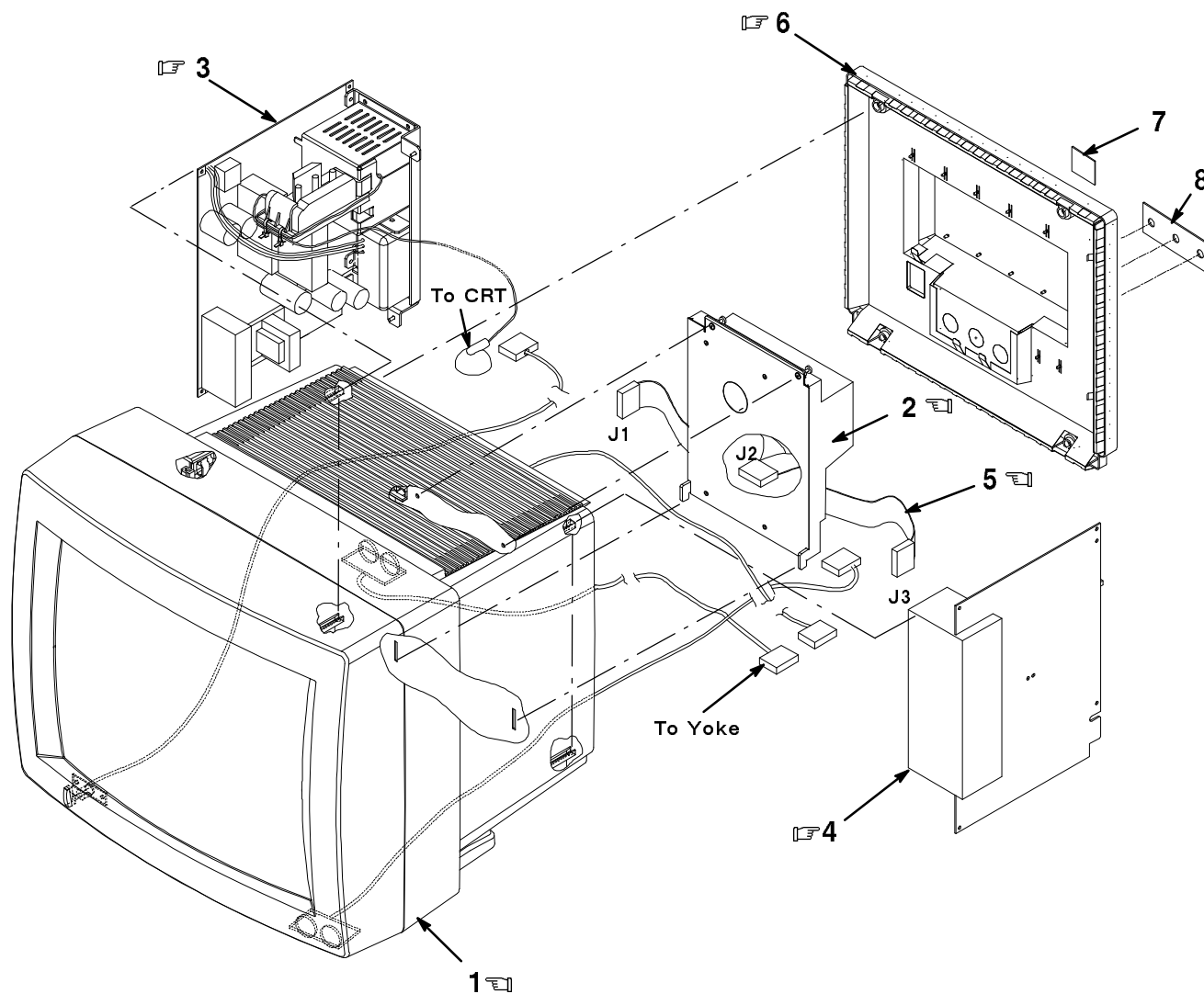


SHOWN FOR REFERENCE ONLY

VR319-01D-IL

Figure 1C. Casting Assembly, Monochrome Video

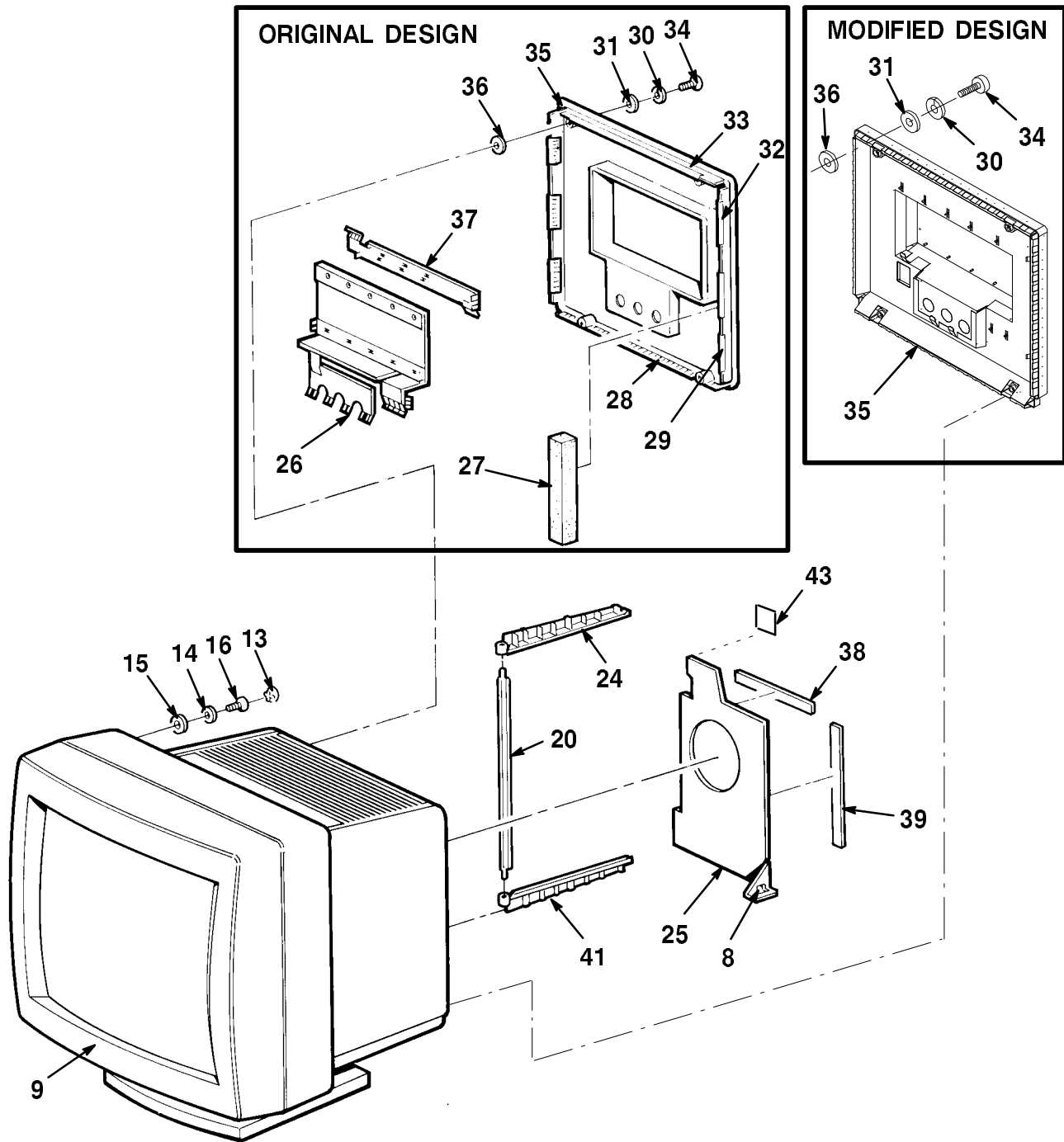
FIG.& ITEM NO.	DESCRIPTION	^B DEC PART NO.	ECO CUT-IN 70-27010 00000	USED ON CODE	REF FIG NO.
1C- 	CASTING ASSEMBLY, MONOCHROME VIDEO	70-27010-02			1
1	*Casting, Non-Painted Video	N/A			
2	*Cover, Casting	N/A			
3	*Plug, Button	N/A			
4	*Washer, Lock	N/A			
5	*Nut, Hex	N/A			
6	*Sil-Pad, Adhesive	N/A			
7	*Module, VR319 Video	N/A			
8	*Washer, Shoulder	N/A			
9	*Screw, Sems Pan H No. 4-40 x 3/8	N/A			
10	*Washer, Flat	N/A			
11	*Insulator, Video PCB (deleted)	N/A	VR319		
	*Insulator, Video PCB (added)	N/A	00003		
12	*Screw, Self-Tap Hex Socket Hd No. 6-32 x 1/4	N/A			
13	*Clip, Wire Routing	N/A			
	NOTE: FRU LEVEL = 70-27010-02. ITEMS 1-13 ARE PART OF THIS FRU, AND CAN NOT BE ORDERED SEPARATELY.				



VR320-01-IL

Figure 2. Monitor Assembly, VR320 Color

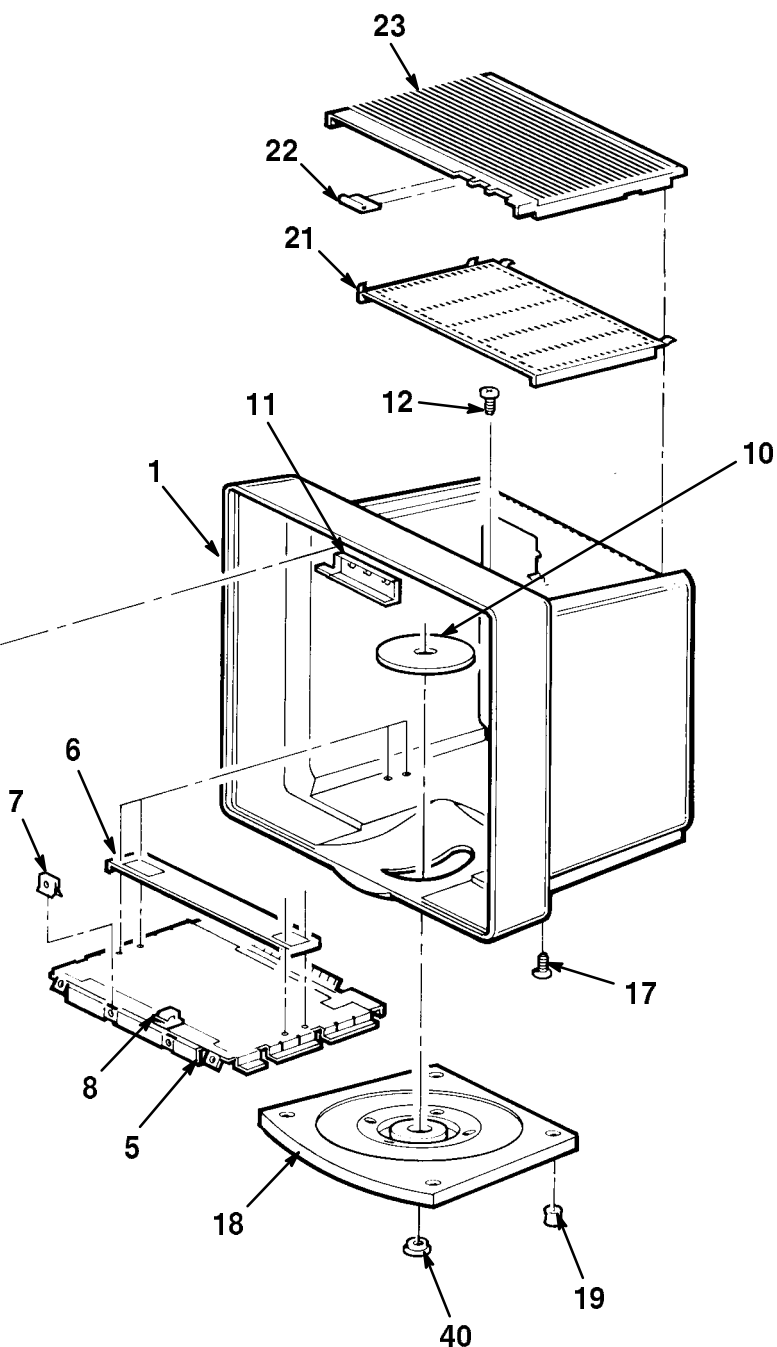
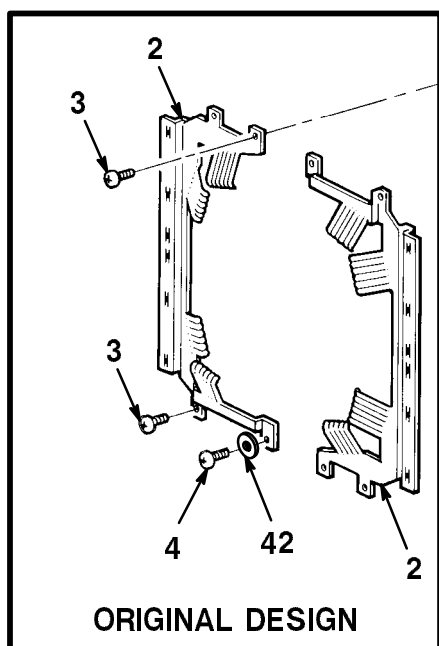
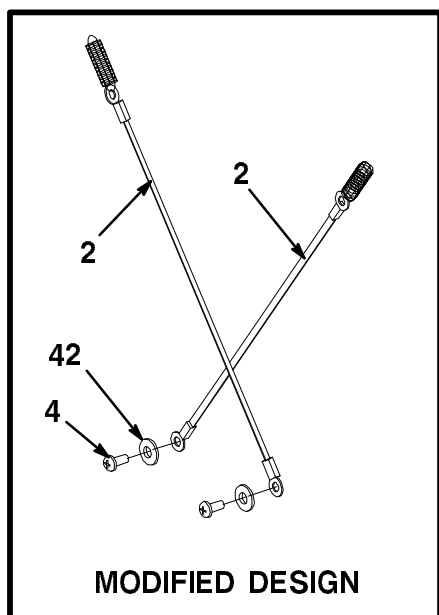
FIG.& ITEM NO.	DESCRIPTION	DEC PART NO.	ECO CUT-IN VR320 00001	USED ON CODE	REF FIG NO.
2-	MONITOR ASSEMBLY, VR320 COLOR				
	Code A – Used on VR320-C4 (Southern Hemisphere 120/240V, 66 Hz)	VR320-C4		A	
	Code B – Used on VR320-CA (Northern Hemisphere 120/240V, 66 Hz)	VR320-CA		B	
	Code C – Used on VR320-D4 (Southern Hemisphere 120/240V, 70 Hz)	VR320-D4		C	
	Code D – Used on VR320-DA (Northern Hemisphere 120/240V, 70Hz)	VR320-DA		D	
1	*CRT/CHASSIS ASSEMBLY (deleted) (Northern Hemisphere 120/240V)	70-27429-01	VR320 00003	BD	2A
	*CRT/CHASSIS ASSEMBLY (deleted) (Southern Hemisphere 120/240V)	70-27429-02	VR320 00003	AC	2A
	*CRT/CHASSIS ASSEMBLY (Northern Hemisphere 120/240V)	70-27429-03		BD	2A
	*CRT/CHASSIS ASSEMBLY (Southern Hemisphere 120/240V)	70-27429-04		AC	2A
2	*CASTING ASSEMBLY, COLOR VIDEO	70-27010-01			2C
3	*Module, VR320 Power Supply	54-19621-01			
4	*Module, VR320 Deflection	54-19301-01			
5	*Cable Assembly, Interconnect (J3 Connector)	70-27000-01			
6	*Cover Assembly, Rear	70-27991-01			
7	*Label, Power	36-33038-03			
8	*Label, Regulatory	36-32052-02			



SHOWN FOR REFERENCE ONLY

VR320-01A-SC

Figure 2A. CRT/Chassis Assembly, VR320 (Sheet 1 of 2)



SHOWN FOR REFERENCE ONLY

VR320-01B-SC

Figure 2A. CRT/Chassis Assembly, VR320 (Sheet 2 of 2)





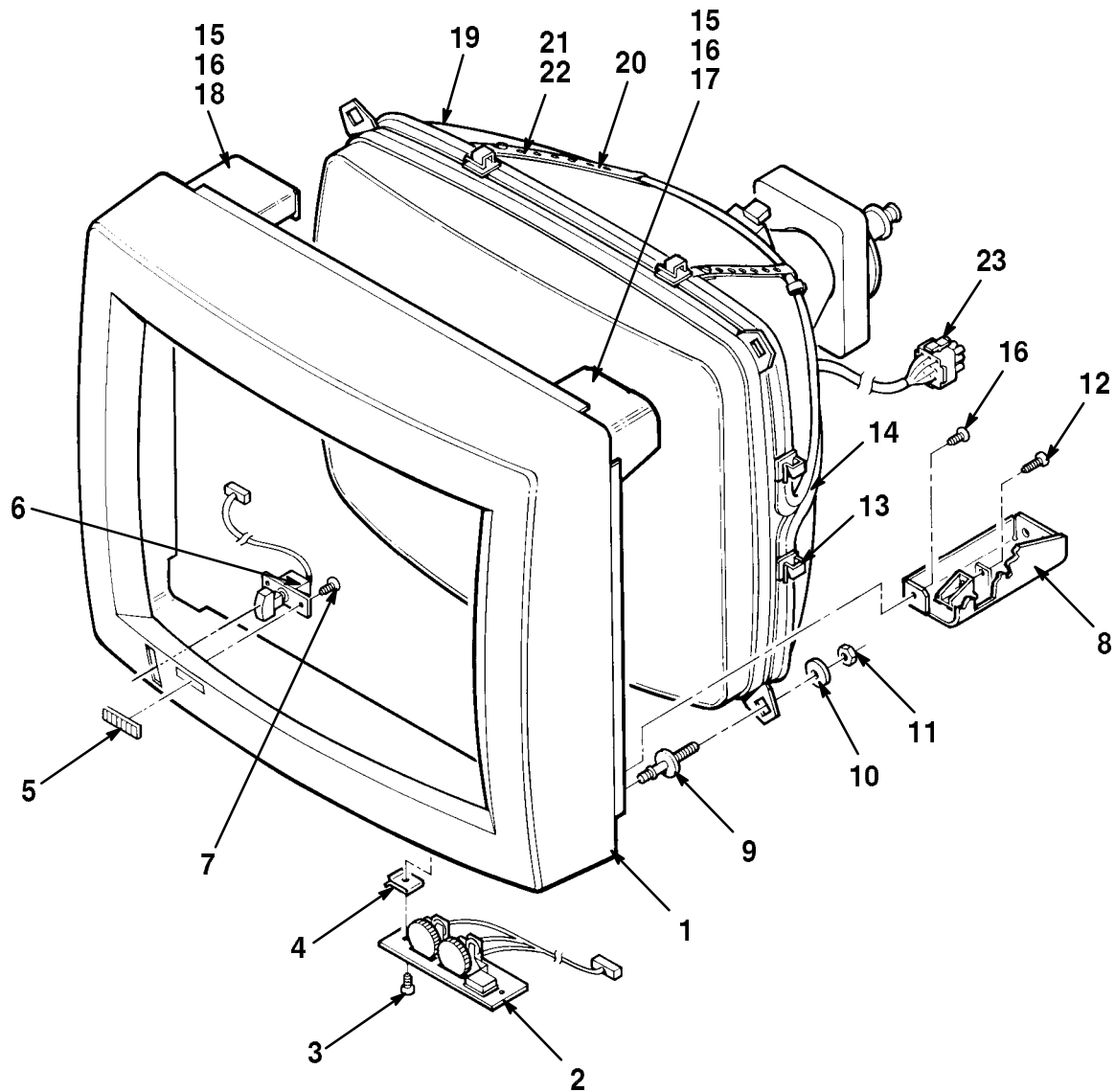
FIG.& ITEM NO.	DESCRIPTION	DEC PART NO.	ECO CUT-IN 70-27429 00001	USED ON CODE	REF FIG NO.
2A- 	CRT/CHASSIS ASSEMBLY, VR320 (deleted) (Northern Hemisphere, 120/240V)	70-27429-01	VR320 00003	BD	2
	CRT/CHASSIS ASSEMBLY, VR320 (deleted) (Southern Hemisphere, 120/240V)	70-27429-02	VR320 00003	AC	2
	CRT/CHASSIS ASSEMBLY, VR320 (Northern Hemisphere, 120/240V)	70-27429-03		BD	2
	CRT/CHASSIS ASSEMBLY, VR320 (Southern Hemisphere, 120/240V)	70-27429-04		AC	2
1	*Enclosure, Monitor	N/A			2B
2	*Bracket, CRT Grounding (deleted) (SEE NOTE)	N/A	VR320		
	*Strap, CRT Grounding (added) (SEE NOTE)	N/A	00003		
3	*Screw, Self-Tap Pan Hd No. 6-19 x 1/2 (deleted)	N/A	VR320 00003		
4	*Screw, Sems Phi Pan Hd No. 8-32 x 5/16	N/A			
5	*Screen Assembly, Enclosure Bottom	N/A			
6	*Bracket, Enclosure	N/A			
7	*Nut, Speed U-Type No. 8-32 x 25/32	N/A			
8	*Clip, Wire Routing Adh. Back	N/A			
9	*BEZEL ASSEMBLY	N/A			
10	*Retainer, Tilt Swivel	N/A			
11	*Control Assembly, Raster	N/A			
12	*Screw, Machine Flat Hd No. 6-32 x 3/8	N/A			
13	*Plug, Hole	N/A			
14	*Washer, Helical Split	N/A			
15	*Washer, Flat	N/A			
16	*Screw, Machine Phi Pan Hd No. 1/4-20 x 1/2 (deleted)	N/A			
	*Screw, Machine Phi Pan Hd No. 1/4-20 x 3/4 (added)	N/A	VR320 00003		
17	*Screw, Self-Tap Flat Hd No. 6-19 x 1/2	N/A			
18	*Base Subassembly	N/A			
19	*Bumper, Rubber	N/A			
20	*Stiffener, Power Supply	N/A			
21	*Screen, Top	N/A			
22	*Cover, Pot. Slot	N/A			
23	*Cover, Top	N/A			
24	*Guide, Card	N/A			
25	*Bracket, Support Wall	N/A			
26	*Screen Assembly, Rear Cover Bottom (deleted)	N/A	VR320 00003		
27	*Foam, Rear Cover (deleted)	N/A	VR320 00003		
28	*Shield, Clip On (deleted)	N/A	VR320 00003		
29	*Shield, Clip On (deleted)	N/A	VR320 00003		

FIG.& ITEM NO.	DESCRIPTION	^D DEC PART NO.	ECO CUT-IN 70-27429 00001	USED ON CODE	REF FIG NO.
2A-					
30	*Washer, Helical Split	N/A			
31	*Washer, Flat	N/A			
32	*Shield, Clip On (deleted)	N/A	VR320 00003		
33	*Shield, Clip On (deleted)	N/A	VR320 00003		
34	*Screw, No. Cap 8-32 x 5/8	N/A			
35	*Cover, Rear	N/A			
36	*Washer, Flat Nylon	N/A			
37	*Screen, Rear Cover (deleted)	N/A	VR320 00003		
38	*Shield, RFI Gasket (deleted)	N/A	VR320 00003		
39	*Shield, RFI Gasket (deleted)	N/A	VR320 00003		
40	*Plug, Button	N/A			
41	*Guide, Card	N/A			
42	*Washer, Flat	N/A			
43	*Clamp, U-Clip Cable (Adh. Bk)	N/A			
	NOTE: FRU LEVEL = 70-27429-01, 02, 03, 04. ITEMS 1-43 ARE PART OF THIS FRU, AND CAN NOT BE ORDERED SEPARATELY.				

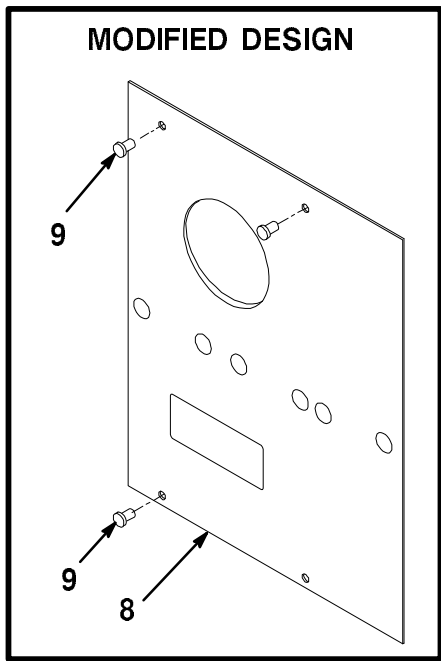


SHOWN FOR REFERENCE ONLY

VR320-01C-SC

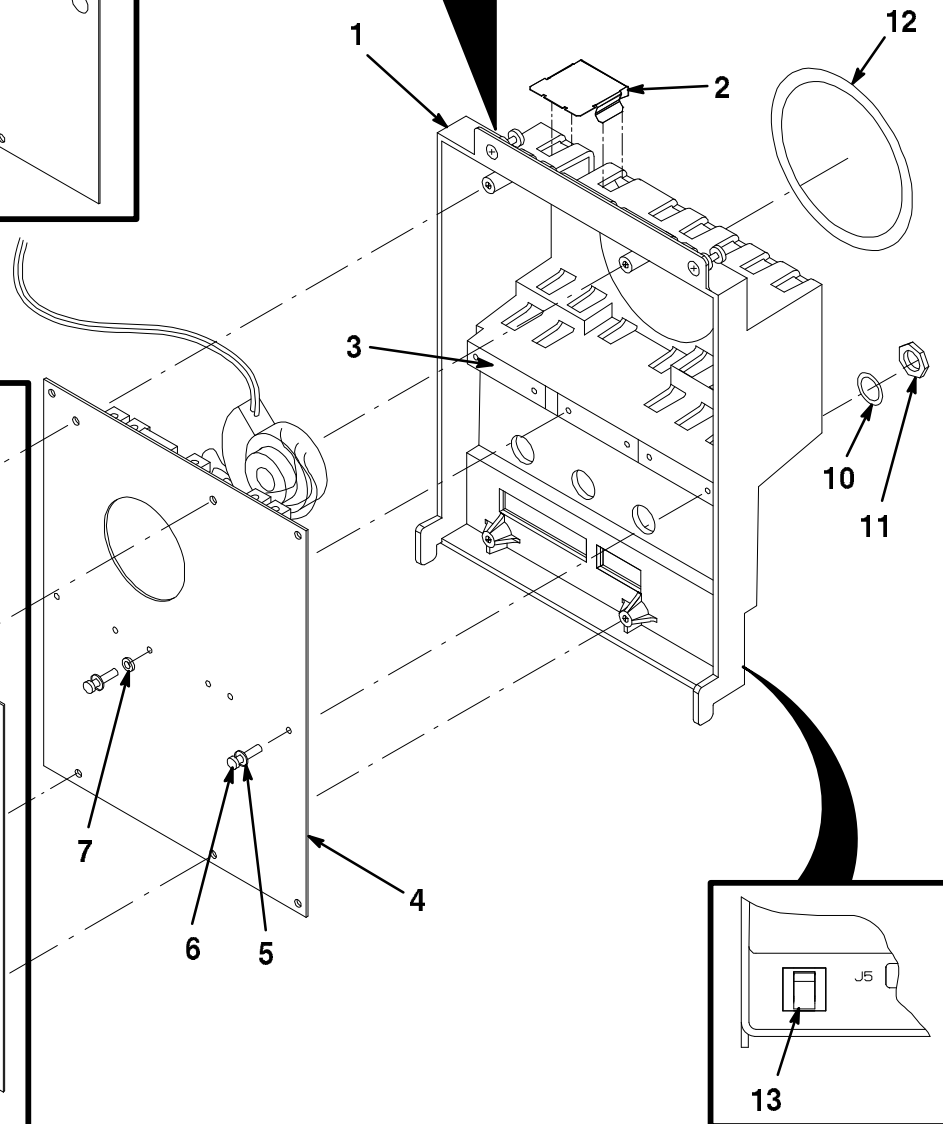
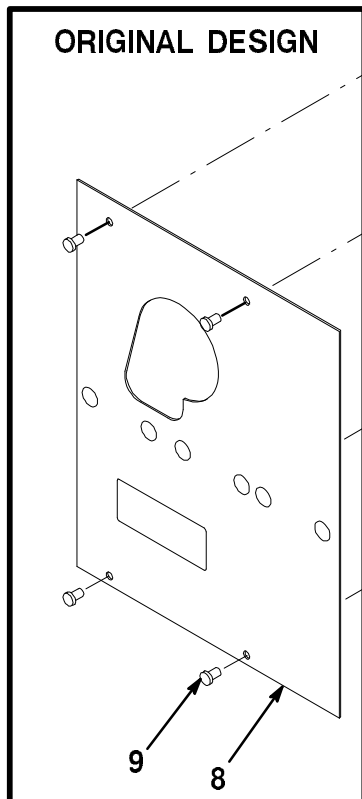
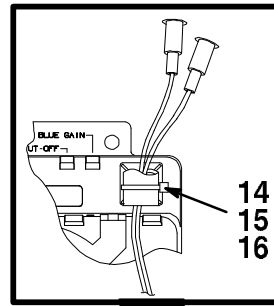
Figure 2B. Bezel Assembly, Color

FIG.& ITEM NO.	DESCRIPTION	DEC PART NO. ^c	ECO CUT-IN 70-27006 00000	USED ON CODE	REF FIG NO.
2B-	BEZEL ASSEMBLY, COLOR	NA			2A
1	* Bezel	N/A			
2	* Cable Assembly, Contrast/Brightness/Degauss	N/A			
3	* Screw, Flat Hd Machine No. 6-32 x 3/8	N/A			
4	* Nut, Speed U-Type No. 6-32	N/A			
5	* Logo, "Digital"	N/A			
6	* Switch Assembly, On/Off	N/A			
7	* Screw, Self-Tap Flat Hd No. 6-19 x 1/2	N/A			
8	* Bracket, Bezel Mounting (See Note)	N/A			
9	* Fastener, CRT Mounting	N/A			
10	* Washer, Flat	N/A			
11	* Nut, Kep No. 1/4-20	N/A			
12	* Screw, Pan Hd Machine Hd No. 10-32 x 1-1/4	N/A			
13	* Clip, Wire Routing Adh Bk	N/A			
14	* Inductor, Degaussing Coil	N/A			
15	* Support, CRT	N/A			
16	* Screw, Sems Phl Pan Hd No. 10-32 x 3/8	N/A			
17	* Bracket, Top Bezel	N/A			
18	* Bracket, Bezel Mounting	N/A			
19	* ITC, 19" Color 0.32MM Dot Pitch DYN	N/A			
20	* Tie, Cable	N/A			
21	* Button, Locking LB-5	N/A			
22	* Strap, Perforated Nylon	N/A			
23	* Cable Assembly, Power Supply/Degauss Coil	N/A			
	NOTE: FRU LEVEL = 70-27429-01, 02, 03, 04. ITEMS 1-23 ARE PART OF THIS FRU, AND CAN NOT BE ORDERED SEPARATELY.				



INDICATES FRU LEVEL PARTS.


PARTS LIST



SHOWN FOR REFERENCE ONLY

VR320-02D-IL

Figure 2C. Casting Assembly, Color Video

FIG.& ITEM NO.	DESCRIPTION	DEC PART NO. ^c	ECO CUT-IN 70-27010 00000	USED ON CODE	REF FIG NO.
2C- 	CASTING ASSEMBLY, COLOR VIDEO	70-27010-01			2
1	*Casting, Video	N/A			
2	*Cover, Casting	N/A			
3	*Pad, Conductive Thermal	N/A			
4	*Module, VR320 Amplifier	N/A			
5	*Washer, Flat	N/A			
6	*Screw, Sems Phl Pan Hd No.4-40 x 3/8	N/A			
7	*Washer, Shoulder	N/A			
8	*Insulator, Video Module (deleted)	N/A	VR320		
	*Insulator, Video Module (added)	N/A	00003		
9	*Screw, Self-Tap Hex Hd No. 6-32 x 1/4	N/A			
10	*Washer, Lock	N/A			
11	*Nut, Hex No. 1/2-28 Brass/Nickle Panel	N/A			
12	*Plug, Button 3 Inch	N/A			
13	*Clip, Wire Routing Adh Bk	N/A			
14	*Mount, Cable Tie Adh Bk	N/A			
15	*Tie, Cable 2 Inch Max Bdl Dia	N/A			
16	*Bead, Ferrite	N/A			
	<p>NOTE: FRU LEVEL = 70-27010-01. ITEMS 1-16 ARE PART OF THIS FRU, AND CAN NOT BE ORDERED SEPARATELY.</p>				
					Ω

PART NUMBER/DESCRIPTION INDEX

INDEX BY DEC PART NUMBER
VR319/VR320 MONITORS

PART NO.	DESCRIPTION	FIG NO.	ITEM NO.
36-32052-01	Label, Power	1	9
36-32052-02	Label, Regulatory	2	8
36-33038-01	Label, Regulator	1	8
36-33038-03	Label, Power	2	7
54-19301-01	Module, VR320 Deflection	2	4
54-19303-01	Module, Monochrome Deflection	1	3
54-19621-01	Module, VR320 Power Supply	2	3
54-19621-02	Module, Power Supply	1	4
70-26991-01	Cover, Rear	1	6
70-27000-01	Cable Assembly, Interconnect (J5 Connector)	1	5
70-27000-01	Cable Assembly, Interconnect (J3 Connector)	2	5
70-27010-01	CASTING ASSEMBLY, COLOR VIDEO	2C	N/A
70-27010-01	CASTING ASSEMBLY, COLOR VIDEO	2	2
70-27010-02	CASTING ASSEMBLY, MONOCHROME VIDEO	1	2
70-27010-02	CASTING ASSEMBLY, MONOCHROME VIDEO	1C	N/A
70-27429-01	CRT/CHASSIS ASSEMBLY, VR320 (Northern Hemisphere, 120/240V) (deleted)	2	N/A
70-27429-01	CRT/CHASSIS ASSEMBLY (Northern Hemisphere 120/240V) (deleted)	2	1
70-27429-02	CRT/CHASSIS ASSEMBLY, VR320 (Southern Hemisphere, 120/240V) (deleted)	2A	N/A
70-27429-02	CRT/CHASSIS ASSEMBLY (Southern Hemisphere 120/240V) (deleted)	2	1
70-27429-03	CRT/CHASSIS ASSEMBLY (Northern Hemisphere 120/240V)	2	1
70-27429-03	CRT/CHASSIS ASSEMBLY, VR320 (Northern Hemisphere, 120/240V)	2A	N/A
70-27429-04	CRT/CHASSIS ASSEMBLY (Southern Hemisphere 120/240V)	2	1
70-27429-04	CRT/CHASSIS ASSEMBLY, VR320 (Southern Hemisphere, 120/240V)	2A	N/A
70-27429-05	CRT/CHASSIS ASSEMBLY, VR319 (Northern Hemisphere 120/240V)	1A	N/A
70-27429-05	CRT/CHASSIS ASSEMBLY (Northern Hemisphere 120/240V)	1	1
70-27429-06	CRT/CHASSIS ASSEMBLY, VR319 (Southern Hemisphere 120/240)	1A	N/A
70-27429-06	CRT/CHASSIS ASSEMBLY (Southern Hemisphere 120/240V)	1	1
70-27429-07	CRT/CHASSIS ASSEMBLY, VR319 (Northern Hemisphere 120/240V) (deleted)	1A	N/A
70-27429-07	CRT/CHASSIS ASSEMBLY (Northern Hemisphere 120/240V) (deleted)	1	1
70-27429-08	CRT/CHASSIS ASSEMBLY (Southern Hemisphere 120/240V) (deleted)	1	1
70-27429-08	CRT/CHASSIS ASSEMBLY, VR319 (Southern Hemisphere 120/240V) (deleted)	1A	N/A
70-27991-01	Cover Assembly, Rear	2	6
74-43499-01	Collar, Video (added)	1	7

INDEX BY DEC PART NUMBER
VR319/VR320 MONITORS

PART NO.	DESCRIPTION	FIG NO.	ITEM NO.
VR319-C4	VR319-C4 (Southern Hemisphere 120/240V, 66 Hz)	1	N/A
VR319-CA	VR319-CA (Northern Hemisphere 120/240V, 66 Hz)	1	N/A
VR319-D4	VR319-D4 (Southern Hemisphere 120/240V, 72 Hz)	1	N/A
VR319-DA	VR319-DA (Northern Hemisphere 120/240V, 72 Hz)	1	N/A
VR320-C4	VR320-C4 (Southern Hemisphere 120/240V, 66 Hz)	2	N/A
VR320-CA	VR320-CA (Northern Hemisphere 120/240V, 66 Hz)	2	N/A
VR320-D4	VR320-D4 (Southern Hemisphere 120/240V, 70 Hz)	2	N/A
VR320-DA	VR320-DA (Northern Hemisphere 120/240V, 70 Hz)	2	N/A

INDEX BY DEC PART DESCRIPTION
VR319/VR320 MONITORS

DESCRIPTION	DEC PART NO.	FIG. NO.	ITEM NO.
Base Subassembly	N/A	2A	18
Base Subassembly	N/A	1A	15
Bead, Ferrite	N/A	2C	16
Bezel	N/A	2B	1
BEZEL ASSEMBLY	N/A	2A	9
BEZEL ASSEMBLY, COLOR	N/A	2B	N/A
BEZEL ASSEMBLY, MONOCHROME	N/A	1B	N/A
BEZEL ASSEMBLY, MONOCHROME	N/A	1A	19
Bezel, Monochrome	N/A	1B	1
Bracket, Bezel Mounting	N/A	2B	18
Bracket, Bezel Mounting	N/A	1B	12
Bracket, Bezel Mounting	N/A	1B	18
Bracket, Bezel Mounting	N/A	2B	8
Bracket, CRT Grounding (deleted)	N/A	1A	18
Bracket, CRT Grounding (deleted)	N/A	2A	2
Bracket, Enclosure	N/A	2A	6
Bracket, Mono Bezel Mounting	N/A	1B	15
Bracket, Stiffener Enclosure	N/A	1A	11
Bracket, Support Wall	N/A	2A	25
Bracket, Top Bezel	N/A	2B	17
Bracket, Wall Support	N/A	1A	23
Bumper, Rubber	N/A	2A	19
Bumper, Rubber	N/A	1A	16
Button, Locking LB-5	N/A	2B	21
Cable Assembly, Brightness/Contrast/Degauss	N/A	1B	5
Cable Assembly, Contrast/Brightness/Degauss	N/A	2B	2
Cable Assembly, Interconnect (J3 Connector)	70-27000-01	2	5
Cable Assembly, Interconnect (J5 Connector)	70-27000-01	1	5
Cable Assembly, Power Supply/Degauss Coil	N/A	2B	23
Cable Assembly, Switch	N/A	1B	7
CASTING ASSEMBLY, COLOR VIDEO	70-27010-01	2	2
CASTING ASSEMBLY, COLOR VIDEO	70-27010-01	2C	N/A
CASTING ASSEMBLY, MONOCHROME VIDEO	70-27010-02	1C	N/A
CASTING ASSEMBLY, MONOCHROME VIDEO	70-27010-02	1	2
Casting, Non-Painted Video	N/A	1C	1
Casting, Video	N/A	2C	1
Clamp, U-Clip Cable (Adh. Bk)	N/A	2A	43
Clip, Wire Routing	N/A	1A	5
Clip, Wire Routing	N/A	1C	13
Clip, Wire Routing Adh Bk	N/A	2C	13
Clip, Wire Routing Adh Bk	N/A	2B	13
Clip, Wire Routing Adh. Back	N/A	2A	8
Collar, Video (added)	74-43499-01	1	7
Control Assembly, Raster	N/A	2A	11
Control Assembly, Raster	N/A	1A	10
Cover Assembly, Rear	70-27991-01	2	6
Cover, Casting	N/A	1C	2
Cover, Casting	N/A	2C	2
Cover, Pot. Slot	N/A	1A	22
Cover, Pot. Slot	N/A	2A	22
Cover, Rear	N/A	2A	35
Cover, Rear	70-26991-01	1	6
Cover, Rear	N/A	1A	27
Cover, Top	N/A	1A	21

INDEX BY DEC PART DESCRIPTION
VR319/VR320 MONITORS

DESCRIPTION	DEC PART NO.	FIG. NO.	ITEM NO.
Cover, Top	N/A	2A	23
CRT, 19" Monochrome (Dark Glass)	N/A	1B	11
CRT/CHASSIS ASSEMBLY (Northern Hemisphere 120/240V)	70-27429-05	1	1
CRT/CHASSIS ASSEMBLY (Northern Hemisphere 120/240V)	70-27429-03	2	1
CRT/CHASSIS ASSEMBLY (Northern Hemisphere 120/240V) (deleted)	70-27429-01	2	1
CRT/CHASSIS ASSEMBLY (Northern Hemisphere 120/240V) (deleted)	70-27429-07	1	1
CRT/CHASSIS ASSEMBLY (Southern Hemisphere 120/240V)	70-27429-06	1	1
CRT/CHASSIS ASSEMBLY (Southern Hemisphere 120/240V)	70-27429-04	2	1
CRT/CHASSIS ASSEMBLY (Southern Hemisphere 120/240V) (deleted)	70-27429-08	1	1
CRT/CHASSIS ASSEMBLY (Southern Hemisphere 120/240V) (deleted)	70-27429-02	2	1
CRT/CHASSIS ASSEMBLY, VR319 (Northern Hemisphere 120/240V)	70-27429-05	1A	N/A
CRT/CHASSIS ASSEMBLY, VR319 (Northern Hemisphere 120/240V) (deleted)	70-27429-07	1A	N/A
CRT/CHASSIS ASSEMBLY, VR319 (Southern Hemisphere 120/240)	70-27429-06	1A	N/A
CRT/CHASSIS ASSEMBLY, VR319 (Southern Hemisphere 120/240V) (deleted)	70-27429-08	1A	N/A
CRT/CHASSIS ASSEMBLY, VR320 (Northern Hemisphere, 120/240V) (deleted)	70-27429-01	2A	N/A
CRT/CHASSIS ASSEMBLY, VR320 (Northern Hemisphere, 120/240V)	70-27429-03	2A	N/A
CRT/CHASSIS ASSEMBLY, VR320 (Southern Hemisphere, 120/240V)	70-27429-04	2A	N/A
CRT/CHASSIS ASSEMBLY, VR320 (Southern Hemisphere, 120/240V) (deleted)	70-27429-02	2A	N/A
Enclosure, Monitor	N/A	2A	1
Enclosure, Monitor	N/A	1A	1
Fastener (deleted)	N/A	1A	42
Fastener, CRT Mounting	N/A	2B	9
Fastener, CRT Mounting	N/A	1B	2
Foam, Rear Cover (deleted)	N/A	2A	27
Foam, Rear Cover (deleted)	N/A	1A	35
Guide, Card	N/A	1A	41
Guide, Card	N/A	1A	43
Guide, Card	N/A	2A	24
Guide, Card	N/A	2A	41
Inductor, Degaussing Coil	N/A	2B	14
Insulator, Video Module (added)	N/A	2C	8
Insulator, Video Module (deleted)	N/A	2C	8
Insulator, Video PCB (added)	N/A	1C	11
Insulator, Video PCB (deleted)	N/A	1C	11
ITC, 19" Color 0.32MM Dot Pitch DYN	N/A	2B	19

INDEX BY DEC PART DESCRIPTION
VR319/VR320 MONITORS

DESCRIPTION	DEC PART NO.	FIG. NO.	ITEM NO.
Label, Power	36-33038-03	2	7
Label, Power	36-32052-01	1	9
Label, Regulator	36-33038-01	1	8
Label, Regulatory	36-32052-02	2	8
Logo, "Digital"	N/A	2B	5
Logo, DIGITAL	N/A	1B	6
Module, Monochrome Deflection	54-19303-01	1	3
Module, Power Supply	54-19621-02	1	4
Module, VR319 Video	N/A	1C	7
Module, VR320 Amplifier	N/A	2C	4
Module, VR320 Deflection	54-19301-01	2	4
Module, VR320 Power Supply	54-19621-01	2	3
MONITOR ASSEMBLY, VR319 MONOCHROME	N/A	1	N/A
MONITOR ASSEMBLY, VR320 COLOR	N/A	2	N/A
Mount, Cable Tie Adh Bk	N/A	2C	14
Nut, Hex	N/A	1C	5
Nut, Hex No. 1/2-28 Brass/Nickle Panel	N/A	2C	11
Nut, Kep No. 1/4-20	N/A	2B	11
Nut, Lockwasher	N/A	1B	10
Nut, Speed U-Type	N/A	1A	12
Nut, Speed U-Type No. 6-32	N/A	2B	4
Nut, Speed U-Type No. 8-32 x 25/32	N/A	2A	7
Nut, U-Type Speed	N/A	1B	3
Pad, Conductive Thermal	N/A	2C	3
Plug, Button	N/A	1C	3
Plug, Button	N/A	2A	40
Plug, Button	N/A	1A	39
Plug, Button 3 Inch	N/A	2C	12
Plug, Hole	N/A	2A	13
Plug, Hole	N/A	1A	9
Retainer, Tilt Swivel	N/A	2A	10
Retainer, Tilt Swivel	N/A	1A	2
Screen Assembly, Bottom Enclosure	N/A	1A	14
Screen Assembly, Enclosure Bottom	N/A	2A	5
Screen Assembly, Rear Cover Bottom (deleted)	N/A	1A	24
Screen Assembly, Rear Cover Bottom (deleted)	N/A	2A	26
Screen, Rear Cover (deleted)	N/A	1A	25
Screen, Rear Cover (deleted)	N/A	2A	37
Screen, Top	N/A	1A	20
Screen, Top	N/A	2A	21
Screw, Cap Socket Hd No. 8-32 x 5/8	N/A	1A	28
Screw, Flat Hd Machine No. 6-32 x 3/8	N/A	2B	3
Screw, Machine Flat Hd No. 6-32 x 3/8	N/A	1B	4
Screw, Machine Flat Hd No. 6-32 x 3/8	N/A	2A	12
Screw, Machine Flat Hd No. 6-32 x 3/8	N/A	1A	8
Screw, Machine Pan Hd No. 1/4-20 x 1/2 (deleted)	N/A	1A	4
Screw, Machine Pan Hd No. 1/4-20 x 3/4 (added)	N/A	1A	4
Screw, Machine Pan Hd No. 10-32	N/A	1B	14
Screw, Machine Phl Pan Hd No. 1/4-20 x 1/2 (deleted)	N/A	2A	16
Screw, Machine Phl Pan Hd No. 1/4-20 x 3/4 (added)	N/A	2A	16

INDEX BY DEC PART DESCRIPTION
VR319/VR320 MONITORS

DESCRIPTION	DEC PART NO.	FIG. NO.	ITEM NO.
Screw, No. Cap 8-32 x 5/8	N/A	2A	34
Screw, Pan Hd Machine Hd No. 10-32 x 1-1/4	N/A	2B	12
Screw, Self-Tap Flat Hd No. 6-19 x 1/2	N/A	1B	8
Screw, Self-Tap Flat Hd No. 6-19 x 1/2	N/A	2A	17
Screw, Self-Tap Flat Hd No. 6-19 x 1/2	N/A	2B	7
Screw, Self-Tap Flat Hd No. 6-19 x 1/2 (deleted)	N/A	1A	3
Screw, Self-Tap Hex Hd No. 6-32 x 1/4	N/A	2C	9
Screw, Self-Tap Hex Socket Hd No. 6-32 x 1/4	N/A	1C	12
Screw, Self-Tap Pan Hd No. 6-19 x 1/2 (deleted)	N/A	2A	3
Screw, Self-Tap Pan Hd No. 6-19 x 5/16 (deleted)	N/A	1A	13
Screw, Sems Pan H No. 4-40 x 3/8	N/A	1C	9
Screw, Sems Pan Hd No. 10-32 x 3/8	N/A	1B	16
Screw, Sems Pan Hd No. 8-32 x 5/16	N/A	1A	17
Screw, Sems Phl Pan Hd No. 10-32 x 3/8	N/A	2B	16
Screw, Sems Phl Pan Hd No. 8-32 x 5/16	N/A	2A	4
Screw, Sems Phl Pan Hd No. 4-40 x 3/8	N/A	2C	6
Shield, Clip On (deleted)	N/A	1A	33
Shield, Clip On (deleted)	N/A	2A	33
Shield, Clip On (deleted)	N/A	1A	34
Shield, Clip On (deleted)	N/A	2A	29
Shield, Clip On (deleted)	N/A	1A	30
Shield, Clip On (deleted)	N/A	2A	32
Shield, Clip On (deleted)	N/A	2A	28
Shield, Clip On (deleted)	N/A	1A	29
Shield, RFI Gasket (deleted)	N/A	1A	38
Shield, RFI Gasket (deleted)	N/A	2A	38
Shield, RFI Gasket (deleted)	N/A	2A	39
Shield, RFI Gasket (deleted)	N/A	1A	37
Sil-Pad, Adhesive	N/A	1C	6
Stiffener, P.S.	N/A	1A	36
Stiffener, Power Supply	N/A	2A	20
Strap, CRT Grounding (added)	N/A	1A	18
Strap, CRT Grounding (added)	N/A	2A	2
Strap, Perforated Nylon	N/A	2B	22
Support, CRT	N/A	2B	15
Support, CRT Mono	N/A	1B	17
Switch Assembly, On/Off	N/A	2B	6
Tape, Fiberglass Adhesive	N/A	1B	19
Tie, Cable	N/A	2B	20
Tie, Cable 2 Inch Max Bdl Dia	N/A	2C	15
VR319-C4 (Southern Hemisphere 120/240V, 66 Hz)	VR319-C4	1	N/A
VR319-CA (Northern Hemisphere 120/240V, 66 Hz)	VR319-CA	1	N/A
VR319-D4 (Southern Hemisphere 120/240V, 72 Hz)	VR319-D4	1	N/A
VR319-DA (Northern Hemisphere 120/240V, 72 Hz)	VR319-DA	1	N/A
VR320-C4 (Southern Hemisphere 120/240V, 66 Hz)	VR320-C4	2	N/A
VR320-CA (Northern Hemisphere 120/240V, 66 Hz)	VR320-CA	2	N/A
VR320-D4 (Southern Hemisphere 120/240V, 70 Hz)	VR320-D4	2	N/A
VR320-DA (Northern Hemisphere 120/240V, 70 Hz)	VR320-DA	2	N/A

INDEX BY DEC PART DESCRIPTION
VR319/VR320 MONITORS

DESCRIPTION	DEC PART NO.	FIG. NO.	ITEM NO.
Washer, Flat	N/A	1A	31
Washer, Flat	N/A	1A	40
Washer, Flat	N/A	1C	10
Washer, Flat	N/A	2B	10
Washer, Flat	N/A	2A	15
Washer, Flat	N/A	2A	31
Washer, Flat	N/A	1B	9
Washer, Flat	N/A	2A	42
Washer, Flat	N/A	2C	5
Washer, Flat Nylon	N/A	2A	36
Washer, Flat Nylon	N/A	1A	26
Washer, Flat SST	N/A	1A	7
Washer, Helical Split	N/A	1A	32
Washer, Helical Split	N/A	2A	30
Washer, Helical Split	N/A	1A	6
Washer, Helical Split	N/A	2A	14
Washer, Lock	N/A	2C	10
Washer, Lock	N/A	1C	4
Washer, Shoulder	N/A	1C	8
Washer, Shoulder	N/A	2C	7
Yoke, Deflection 114 Deg	N/A	1B	13

READER'S COMMENTS

VR319/VR320 MONITORS
Illustrated Parts Breakdown
EK-VR319-IP-002

1. How did you use this manual? (Circle your response.)

- (a) Installation (c) Maintenance (e) Training
(b) Operation/Use (d) Programming (f) Other (Please specify) _____

2. Did the manual meet your needs? Yes ☐ No ☐ Why? _____

3. Please rate the manual on the following categories. (Circle your response.)

	Excellent	Good	Fair	Poor	Unacceptable
Accuracy	5	4	3	2	1
Clarity	5	4	3	2	1
Completeness	5	4	3	2	1
Illustrations, examples	5	4	3	2	1
Overall ease of use	5	4	3	2	1
Table of Content, Index	5	4	3	2	1

4. What things did you like *most* about this manual? _____

5. What things did you like *least* about this manual? _____

6. Please list and describe any errors you found in the manual.

Page	Description/Location of Error
_____	_____
_____	_____
_____	_____
_____	_____

7. Which of the following most clearly describes your job ? (Circle your response.)

- (a) Administrative Support (e) System Manager (i) Education/Trainer
(b) Manager/Supervisor (f) Computer Operator (j) Sales/Marketing
(c) Scientist/Engineer (g) Software Support (k) Other (Please specify) _____
(d) Programmer/Analyst (h) Hardware Support

OPTIONAL INFORMATION

Name _____ Job Title _____
Street _____ Company _____
City _____ Department _____
State/Country _____ Telephone Number _____
Postal (ZIP) Code _____ Date _____

THANK YOU FOR YOUR COMMENTS AND SUGGESTIONS.

Please do not use this form to order manuals. Contact your representative at Digital Equipment Corporation or (in the USA) call our DECdirect™ department at this toll-free number : 800-258-1710